

LCMS Analysis Report

```
<<Sample Information>> : System Administrator
Acquired by
Sample Name : BDP TMR alkyne
Injection Volume : 10 uL
Data File : BDP TMR alkyne.lcd
Method File : 6min-2%-100% ACN-254nm-MS(90-1000)-0.8流速-FA.lcm
Date Acquired : 2020/10/30 16:11:41
:
```

```
<<LC Time Program>>
Time      Module      Command      Value
0.01     Pumps      Pump B Conc. 2
0.10     Pumps      Pump B Conc. 2
4.70     Pumps      Pump B Conc. 95
5.70     Pumps      Pump B Conc. 95
5.71     Pumps      Pump B Conc. 2
6.00     Controller Stop
```

```
<<Pump>>
Mode      : Binary gradient
Pump A    : LC-20AD
Pump B    : LC-20AD
Total Flow : 0.8000 mL/min
B Conc.   : 2.0 %
```

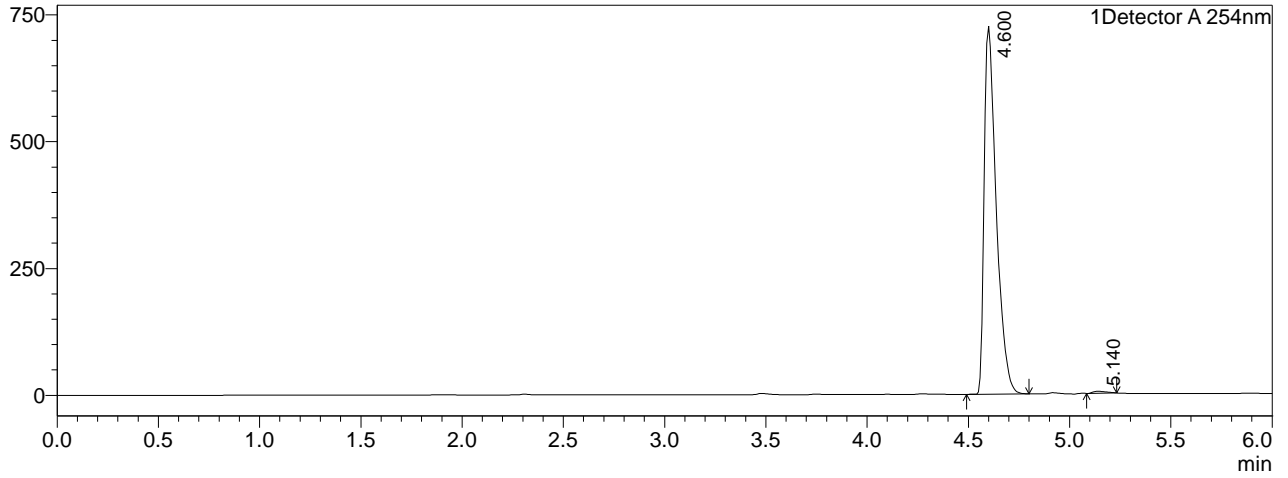
```
<<Oven>>
Oven Temperature : 40 C
```

```
<<Interface>>
Interface      :ESI
DL Temperature :250 C
Nebulizing Gas Frow :1.50 L/min
Heat Block     :200 C
Drying Gas     :On
               :15.00 L/min
```

```
<<MS Parameter>>
Initial Valve Position :-
--Segment 1 Event 1--
Start Time      :0.00 min
End Time        :6.00 min
Acquisition Mode :Scan
Polarity        :Positive
Event Time      :1.00 sec
Detector Voltage :+1.25 kV
Threshold       :0
Start m/z       :90.00
End m/z         :1000.00
Scan Speed      :938 u/sec
Interface Volt. :Use the Data in the Tuning File
DL Volt.        :Use the Data in the Tuning File
Qarray DC Voltage :Use the Data in the Tuning File
Qarray DC Voltage :Use the Data in the Tuning File
--Segment 1 Event 2--
Start Time      :0.00 min
End Time        :6.00 min
Acquisition Mode :Scan
Polarity        :Negative
Event Time      :1.00 sec
Detector Voltage :+1.25 kV
Threshold       :0
Start m/z       :90.00
End m/z         :1000.00
Scan Speed      :938 u/sec
Interface Volt. :Use the Data in the Tuning File
DL Volt.        :Use the Data in the Tuning File
Qarray DC Voltage :Use the Data in the Tuning File
Qarray DC Voltage :Use the Data in the Tuning File
```

<Chromatogram>

mV



Peak Table

Detector A 254nm

Peak#	Ret. Time	Area	Height	Conc.	Height%	Area%
1	4.600	3011684	726102	99.409	99.439	99.409
2	5.140	17899	4097	0.591	0.561	0.591
Total		3029583	730199		100.000	100.000

